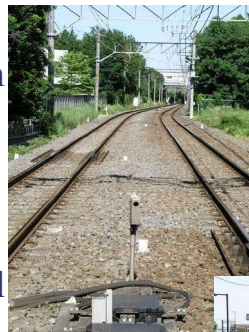


## Suburbia

I promise I'll try to get some files out displaying the natural and beautiful green of Japan, but I've always been more drawn to photographing cities than I have natural scenery. The thing about photographing natural scenery, is that it is always much better in person than the camera can possible show. You have the smell of the earth, the sound of wind in the trees, birds flying across the sky, and a full range of colors that can never quite be captured accurately with a camera (although some come fairly close). Contrast this with the city, which is basically ugly. You are standing on a crowded street, bumping into you, people are honking and pouring toxic gases into the air. The very dirty backdrop to the stress of the city, but - in stark contrast with better in the natural scenery, things generally look picture than they were in reality. Gone is the noise, gone is the smoke, gone are the and old gum on the gray asphalt you stand on with tired feet and fatigued soul. Instead you sit with a favorite drink images at home. The really paradoxical thing about still photography of cities, is that only then can you have a look at what was happening around you at that instant in time. In the actual event you can never begin to understand the reactions of those around you.



The other thing about natural scenery is that natural dramatic exceptions), tends so what do you do with the straight lines of the edge of the picture? With electronic photography, maybe we should start taking round pictures! In any case, since you (barring round pictures) have to work with four straight lines, the straight lines of cities make your representation of reality look as though the world was designed to be square....

photographing cities and lines instead of scenery (with some truly not to have straight lines, that you must deal with at photography, maybe we case, since you (barring straight lines, the straight cities make your representation look as designed to be



Ah! A word about the this page would be in were taken on the western

representation look as designed to be pictures on order! They side of Tokyo, I'm not

but scenes like this are to be found all over the country. I'm not criticizing anyone or anybody by highlighting rather mundane scenes, it's just that I believe a little of all aspects of any overall scene should be shown. Japan is very much

a car oriented culture now, despite most people in Tokyo relying on rail travel for most transportation and only using cars on an odd weekend, for vacations, etc. Percentage-wise, there many not be such a large portion of the people of Tokyo riding around on tires, but it only takes a very small percentage of 30,000,000 people to fill up the roads with cars!

Do I find this beauty in the photos on this green. This is more beautiful engined cars! was destroyed by a car



crop of pictures fantastic? Not especially, but there is mundane as well as the sublime. And look at the page. The narrow street that takes pedestrians through what Japan has always been good for, but how much the cities would be without internal combustion-

Much of the greenery on streets throughout the county to make room for the cars. And this is being written enthusiast no less! I love cars, but I hate what they have done to the cities! Out in the countryside, they begin to make sense, with enough space for both live plants and roads for cars. Out in the countryside, I fall in love with the country again and find myself wishing I had a huge stash of cash to draw from so I could just slowly and methodically tour the countryside, possibly some not on the map and map - if they exist. Yes, if you want to see Lyle getting soppo about the infinite beauty of the countryside and the wonderful traditions of Japan, then wire him some cash and he'll get down to business! Enough cash and there could be a long series of nothing but sublime scenes... in the meantime, poor Lyle (figuratively and literally) is stuck in the greater Tokyo area documenting the life in Tokyo as it presents itself to him.



Much of the greenery on streets throughout the county to make room for the cars. And this is being written enthusiast no less! I love cars, but I hate what they have done to the cities! Out in the countryside, they begin to make sense, with enough space for both live plants and roads for cars. Out in the countryside, I fall in love with the country again and find myself wishing I had a huge stash of cash to draw from so I could just slowly and methodically tour the countryside, possibly some not on the map and map - if they exist. Yes, if you want to see Lyle getting soppo about the infinite beauty of the countryside and the wonderful traditions of Japan, then wire him some cash and he'll get down to business! Enough cash and there could be a long series of nothing but sublime scenes... in the meantime, poor Lyle (figuratively and literally) is stuck in the greater Tokyo area documenting the life in Tokyo as it presents itself to him.

Now... perceptive readers of this text may well be wondering "What... what is the point - what is the motivation for this two page clear focus?". Fortunately, I have a clear answer to this question. (I am quite serious available for photo and text hire BTW) I am Specifically OpenOffice.org, which is well with photos and text (I would like to come with a built-in PDF file converter, so post at the site will have been made with OpenOffice.org software (version 1.1.1), which is freely available for download from [www.openoffice.org](http://www.openoffice.org).



ramble with no logical and happy about being testing software! working very have a slight bit though) and the PDF file I

Phew! Done. Now I'll put this on-line. After making a PDF file, I'll try making an HTML version, but I'm fairly certain that the HTML format will not support the formatting I've used in these two pages.

Sore dewa!

Lyle (Hiroshi) Saxon