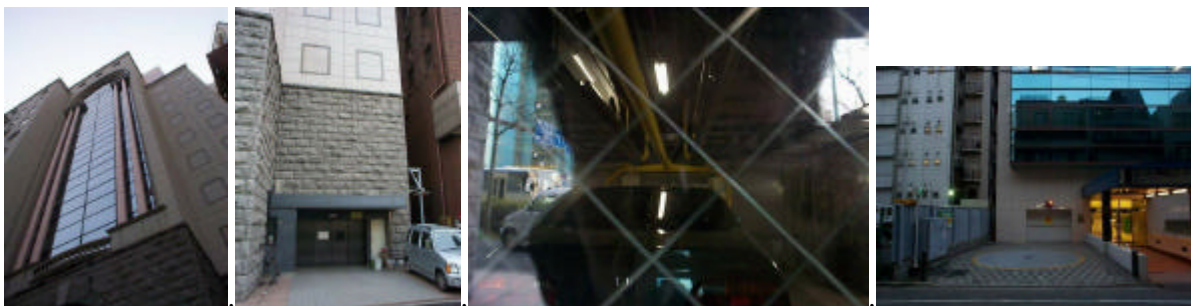


## MP-26 "Vertical Parking, Etc." April 2001

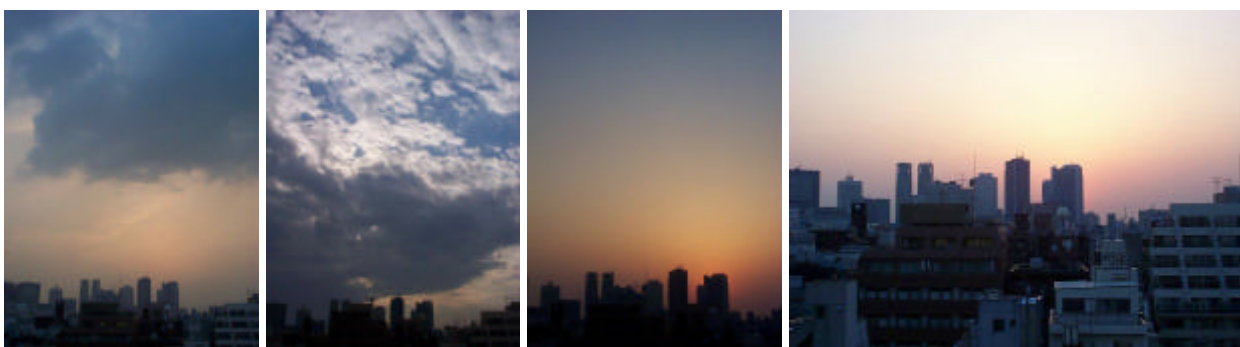


Content picture on the left (bad photo, but contains something I wanted recorded) of how the air gets when the wind dies down. The almost invisible buildings through the white haze are only a twenty minute walk away. The next photo over is also from my office window - looking over to the right. The sloping shape of the buildings is due to a law about a certain amount of sunlight reaching the street... I think!

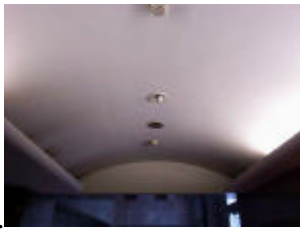
The third photo I've put in here just to show a hotel with the same type of windows as the one at the back side of my desk at work. The other two photos could be titled "On the Streets of Shinjuku".....



I was asked about the "elevator-style parking garage" that I mentioned in MP-25, so I thought I'd send a few pictures of it. Looking up - the section on the right is the parking garage! Sort of hard to imagine how cars are parked in that vertical space I suppose. I remember that I was quite surprised the first time I saw that type of parking here! Looking at the base of the right side of the building, you can see the entrance (with doors closed). The third picture is very hard to make out (I took it through the glass of the entrance door), but if you look very hard in the shadow area you can (I hope!) see a car straight ahead, and looking up and to the left, a little of another car with light reflecting off its side. The cars are rotated around like in a sandwich machine or something. The photo on the far right is of a different (nearby) vertical parking garage, complete with a turnstile to make leaving easier.



Different skies from my office window.....



An example of how the building is being taken care of... the number of burned out light bulbs has been steadily increasing over the year I've been working there. I suppose when the very last bulb burns out and there is no light above at all, they'll have a bank of florescent tubes installed or something..... Out of sight, out of mind? Maybe they don't know that incandescent bulbs are still for sale.....

The other scenes are just some shots I took on the way to Shinjuku Station after work. Typical of what Shinjuku looks like.....



In contrast with the first picture, notice how much easier it is to see the buildings in West Shinjuku. Someday... someday... internal combustion engines will be a thing of past. Lucky future! Poor current generation! Tokyo is a very interesting city to live in - but it would be 100,000 fold more enjoyable without the poisonous gases of the bloody internal combustion engines!

I have a question about the Apple coffee mug I'm using... The company has a set of those, so several of us are using them - but as that logo is not being used now (or is it??), I wonder if those cups ought to be carefully packed away as valuable items.....

Copyright 2001 Lyle (Hiroshi) Saxon (April 29th, 2001)