

Discover Special Attractions – Travel on the Kintetsu Nagano Line

# REKISHI OISHI TONDABAYASHI

## History and Delicious Food in Tondabayashi



Discover Special Attractions – Travel on the Kintetsu Nagano Line

REKISHI OISHI TONDABAYASHI – History and Delicious Food in Tondabayashi

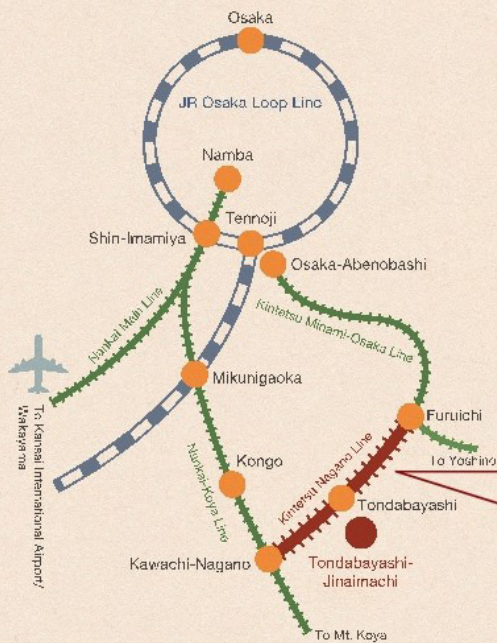
Published January 2018 Publisher/Tondabayashi City Promotion Department Production Cooperation/ Kinki Finance Bureau TEAM Chihomen



# Access to Tondabayashi

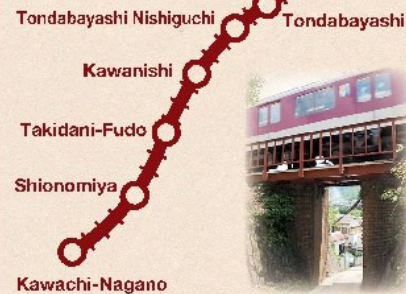
Kintetsu Nagano Line runs through Minami-Kawachi, the southeastern part of Osaka Prefecture. First, go to Osaka-Abenobashi Station and take the Kintetsu Minami-Osaka Line (Nagano Line). It takes approximately 30 minutes from Osaka-Abenobashi Station, and 50 minutes from Osaka Station.

Start Point	Route	Time Required
Osaka-Abenobashi Station	Kintetsu Osaka-Abenobashi Station → Kintetsu Minami-Osaka Line → Furuichi Station → Kintetsu Nagano Line → Tondabayashi Station	Approx. 30 min.
Osaka Station	Osaka Station → JR Osaka Loop Line or Subway Midosuji Line → Tennoji Station/ Kintetsu Osaka-Abenobashi Station → Kintetsu Minami-Osaka Line → Furuichi Station → Kintetsu Nagano Line → Tondabayashi Station	Approx. 50 min.
Shin-Osaka Station	Shin-Osaka Station → Subway Midosuji Line → Tennoji Station/ Kintetsu Osaka-Abenobashi Station → Kintetsu Minami-Osaka Line → Furuichi Station → Kintetsu Nagano Line → Tondabayashi Station	Approx. 1 hr.
Itami Airport	Itami Airport → Osaka Airport Limousine Bus → Abenobashi/ Kintetsu Osaka-Abenobashi Station → Kintetsu Minami-Osaka Line → Furuichi Station → Kintetsu Nagano Line → Tondabayashi Station	Approx. 1 hr.
Kansai International Airport	JR Kansai Airport Station → Express Haruka → Tennoji Station/ Kintetsu Osaka-Abenobashi Station → Kintetsu Minami-Osaka Line → Furuichi Station → Kintetsu Nagano Line → Tondabayashi Station	Approx. 1.5 hr.



## Kintetsu Nagano Line

There are many sites related to historical figures such as Shotoku Taishi, Ono no Imoko, and Kusunoki Masashige along the Kintetsu Nagano Line. What's more, it runs through historical Minami-Kawachi, featuring Koya-kaido Road, which connects to Japan's oldest public road, Takenouchi-kaido Road, Mt. Koya, and Tondabayashi-Jinaimachi, whose history stretches back to the Sengoku (Warring States) Period.



## Tondabayashi Kirameki Museum

The online museum that gathers attractions in Tondabayashi

## Jinaimachi

Enjoy historical sites!

# Welcome to Tondabayashi-Jinaimachi!

Tondabayashi-Jinaimachi developed around the Koshō-ji Branch Temple (Koshōji Betsuin) around 1558.

It grew as a zaigomachi, a zone developed in a farming area, and flourished through trade.

The unique layout of six streets and seven sections has remained since its beginning.

The many preserved merchant's homes remind us of the prosperity of the time.

The homes include the Former Sugiyama Family Residence (National Important Cultural Property).



**Former Tanaka Family Residence**  
This private farming house was donated to Tondabayashi City. It opened as a historical and cultural center in May 2012.



**Former Sugiyama Family Residence**  
The Sugiyama Family was one of eight families that involved in the foundation of Tondabayashi-Jinaimachi. It was designated as a national important cultural property in 1933.



**Koshō-ji Branch Temple (Koshōji Betsuin)**  
Shōshū, the 18th head priest of Koshō-ji Temple in Kyoto founded this temple in 1560. Tondabayashi-Jinaimachi grew around this temple.



## Enjoy strolling through the town!

It is fun to stroll through the retro townscape and discover special treasures such as hand-made Japanese accessories and antiques, and a number of goods with cute animal motifs. Take a break along the way for a cup of coffee and Japanese sweets at one of the local cafés. Treat yourself to a tasty Japanese-style meal or a relaxing overnight stay at a traditional inn.



**Wonderful line-up of antiques that attract collectors**

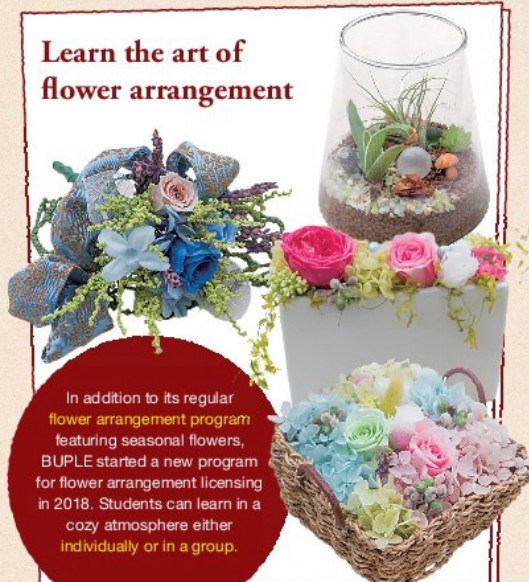
This 120-year-old house was refurbished and opened as an antique shop in 2016. The owner has accumulated an extensive knowledge of antiques since her childhood. Her excellent selection of antique furniture, tableware, and fabrics is popular with overseas collectors too.



**TANTRA**  
3-13 Tondabayashi-cho,  
Tondabayashi City  
TEL: 0721-21-8388  
[Open] 11:00 AM ~ 5:00 PM  
[Closed] Monday/ Tuesday



## Learn the art of flower arrangement



In addition to its regular flower arrangement program featuring seasonal flowers, BUPLE started a new program for flower arrangement licensing in 2018. Students can learn in a cozy atmosphere either individually or in a group.



**BUPLE**  
10-12 Tondabayashi-cho,  
Tondabayashi City  
TEL: 0721-21-3549  
[Open]  
11:00 AM ~ 7:00 PM (Thursday ~ Saturday)  
11:00 AM ~ 5:00 PM (Sunday)  
[Closed]  
Monday/ Tuesday/ Wednesday

## Enjoy unique accessories and Japanese sweets



Look for the retro bus stop objet d'art in front of the store. The storehouse with a quaint atmosphere has a wide variety of knick-knacks and antique tools. The café area offers delicious coffee and matcha made with care by the owner.



**Zakka +++ marche**  
16-32 Tondabayashi-cho,  
Tondabayashi City  
TEL: 090-9541-0845  
[Open] 11:00 AM ~ 5:00 PM  
[Closed] Monday to Thursday  
(Sundays and national holidays are sometimes closed too.)



Wayuzen offers a variety of Japanese-style dishes featuring seasonal vegetables in a menu that changes monthly. You can enjoy Wayuzen's original dishes using Tondabayashi specialty, ebimo (taro) and eggplant. For dinner, this restaurant offers a wide variety of selections, including the chef's choice and dishes that go with sake.



## Enjoy sophisticated Japanese cuisine with a playful heart



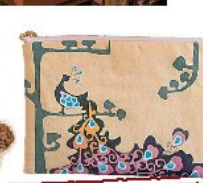
**Wayuzen Onishi**  
13-16 Honmachi,  
Tondabayashi City  
TEL: 0721-51-0247  
[Open] 11:30 AM ~ 2:00 PM  
(Friday, Saturday, and Sunday only)  
(Reservations required between 6:00 PM and 9:00 PM)  
[Closed] Tuesdays

## Comfortable space filled with relaxing scents and gentle dreams



**Kamuan**  
8-14 Tondabayashi-cho,  
Tondabayashi City  
TEL: 090-9216-0709  
[Open] 10:30 AM ~ 5:00 PM  
[Closed] Monday - Thursday

Enjoy lovely accessories with cute cat, owl, panda and other animal motifs. The owner is a certified medical aroma therapist who offers relaxing foot care (women only).

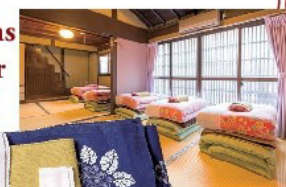


Traditional Japanese beds (futon) in tatami rooms and informal cotton kimono (yukata) sleepwear. The inn only accepts females aged 18 and above. Approx. 90% of the guests are females traveling alone. The inn is very accommodating and the location is great for walks around Jinaimachi.



**Gofujin no Yado Tomariya**  
12-3 Tondabayashi-cho,  
Tondabayashi City  
TEL: 0721-24-8881  
[Closed] Not determined

## Homey accommodations that makes your journey special





## University friends find Instagram-worthy places!



Three friends from Osaka Ohtani University discover spots to take nice pictures for Instagram, twitter, and other SNSs. These include Koibumi Yakushi, the god of love letters, at Jokoku-ji Temple, cafés with beautiful gardens, galleries and cute Japanese shops.

### (Left) AYA

[SNS] I had a compact digital camera, but I use my smart phone most of the time now. I generally don't post on SNS, though I look at pictures posted by others. I post pictures on my timeline.  
[Jinaimachi] It's close to the train station and is a great place for a stroll. I had a fun time today!

### (Middle) NATSU

[SNS] I use Instagram, twitter, and Facebook every day, and I love eating. So I often post pictures of food and people.  
[Jinaimachi] I didn't know that there was such a nice place nearby. I'm planning to visit during job hunting season to relax.

### (Right) MINA

[SNS] I love using twitter, and I post my favorite pictures of nature on Instagram.  
[Jinaimachi] I haven't been to Jinaimachi much, but I'd like to come here more to visit the many stylish shops.



Take photos at this matchmaking spiritual place!



### Koibumi Yakushi - Buddha of Love Letters - at Jokoku-ji Temple

People have prayed to the Yakushi Nyorai (Buddha statue) at Jokoku-ji Temple for health and safety since ancient times. At the Yakushi Festival and other seasonal events each year, the door is opened to show the statue. It is said that the statue was made of layers of love letters pasted one after another, then coated with lacquer. It is popular as the Buddha that grants success in love.



### Taisho Roman

This store sells hand-made aprons and cooking smocks in traditional Japanese patterns as well as accessories such as purses made with left-over material. The products feature hand-sewn warmth and make perfect gifts. Visitors can enjoy walking through the town in a kimono selected from different patterns. Kimono hair styling is also included. The purse-making workshop is also fun.



The great view and atmosphere make for perfect photos!



Find fancy scenes!



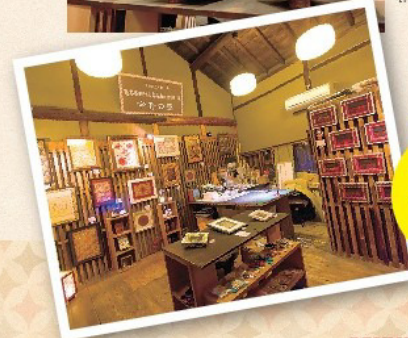
### Coffee Bean Storehouse - Heizo

Some customers seem to be regulars coming to buy their favorite coffee beans. Others are tourists enjoying a cup of coffee. Heizo's relaxing atmosphere attracts coffee connoisseurs from far and wide. After receiving an order, the owner roasts the beans in a high-speed roaster standing near the entrance. Visitors can see their coffee being made from the roasting of the beans while they savor the nice aroma. The traditional roof tiles and white plaster walls seen from the garden are a relaxing sight.



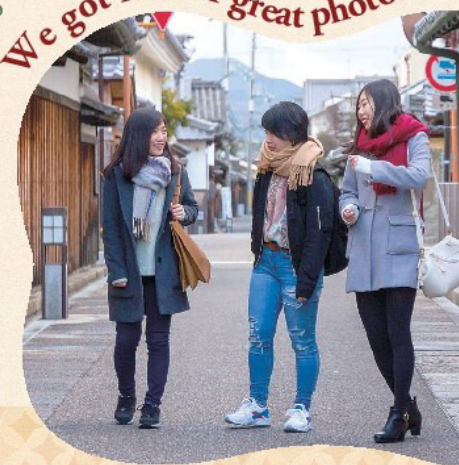
### Konjaku no Tamatebako

This is the atelier and gallery of papercut artist Michiyo Kamei. It's located in a corner of Kobai Kura. She hand cuts Japanese paper into patterns. Very delicate, beautiful pieces of art such as lamp shades are popular. Check the trial lessons and workshops!



Filled with delicate and beautiful works of art!

We got lots of great photos!



The ganache is a collaboration between Koibumi Yakushi and "yamao" confectionary. It has a great balance of sweet and bitter.



## ✿ Tonadabayashi – Visiting Shrines and Temples ✿

# Visiting spiritual places for good luck and success in love

Tonadabayashi City's many sacred places include a beautiful shrine surrounded by greenery, a national important cultural property that exudes a special atmosphere, and a temple recognized as one of three great Acalanatha of Japan. Take a break from your busy routine to experience soul-soothing calm. Shrine and temple festivals are also a treat.

### Migukurumitama Shrine

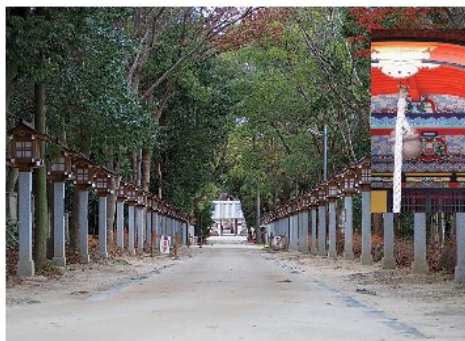
This shrine is said to have been founded by Emperor Sujin for Okuninushi no Mikoto, a god closely related to this area. The beautiful green forest spreads from the hill at the back of the shrine to the main hall. It is a spiritual place included in the list of 100 Great Green Spots in Osaka.



3-2053 Miya-cho, Tondabayashi City  
Open: All day  
Access: Approx. 15 min. by foot from Kishi Station on the Kintetsu Nagano Line

### Nishikori Shrine

It is said that Nishikori Shrine enshrined the guardian deity of the area in ancient times. The main hall has been designated a national important cultural property. Surrounded by trees, the beautiful 100-meter long approach creates serenity.



9-46 Miyakoda-cho, Tondabayashi City  
Open: All day  
Access: Approx. 3 min. by foot from Kawanishi Station on the Kintetsu Nagano Line

### Takidani Fudosen Myo-o-ji Temple

This historical temple was built in 821 by Kobo-Daishi. It is home to the god of eyes, the god of success, and the god of sacrificial loach, who helps people recover from eye disease, helps businesses thrive, brings better fortune, protects against misfortune, and ensures traffic safety.



1762 Ochikata, Tondabayashi City  
Open: All day  
Access: Approx. 15 min. by foot from Takidani-Fudo Station on the Kintetsu Nagano Line



### Sacrificial Loach (Migawari Dojo)

There is a story that has been passed down in this area that a loach released into the river in Takidani was sacrificed to cure someone's eye trouble. Since then, people have kept a loach in a small container at the falls where the faithful undergo cold-water ablutions. On the 28<sup>th</sup> of each month, the day of the monthly temple festival, visitors release the loach in prayer.



### Day of the Temple Festival

The 28<sup>th</sup> of each month

The 1 km long street from the temple to Kintetsu Takidani-Fudo Station is open to pedestrian traffic only on the 28<sup>th</sup> of each month. The many food stalls lining the street sell vegetables, fruits, pickles, bean cakes, octopus dumplings, and Okonomiyaki.



A wide variety of food stalls selling deliciousness!



Find traditional home-made foods that make great souvenirs for friends and family.

You can find many traditional art crafts by skillful craftsmen.







Seasonal Fruit Picking & Vegetable Harvesting

Tondabayashi City  
Agricultural Park



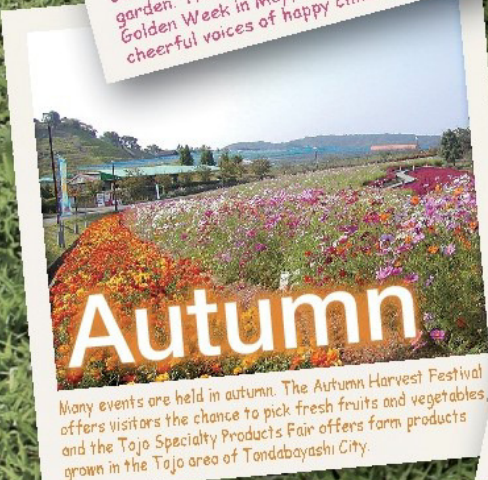
# Savor Farm

Visitors can enjoy picking a wide variety of crops including strawberries, grapes, and potatoes. BBQ is also available. Niko-Niko Market offers farm-fresh products grown in the area. Visit Savor Farm to add a great memory to your trip in Tondabayashi.



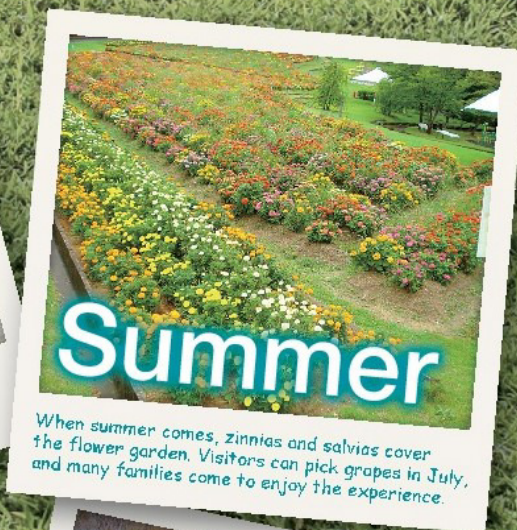
**Spring**

Colorful poppies decorate the expansive flower garden. The Poppy Festival takes place during Golden Week in May, filling the farm with the cheerful voices of happy children.



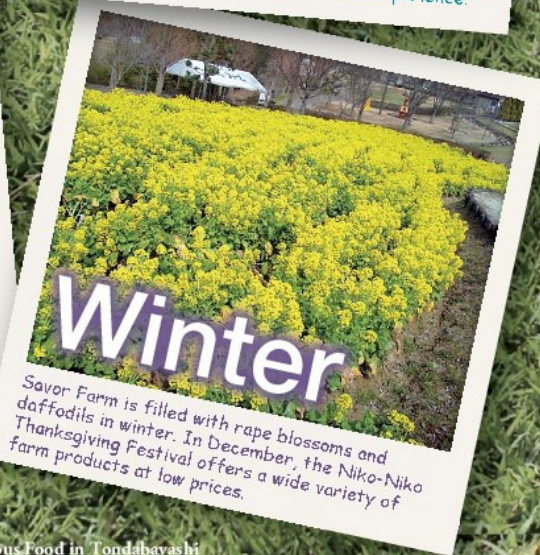
**Autumn**

Many events are held in autumn. The Autumn Harvest Festival offers visitors the chance to pick fresh fruits and vegetables, and the Tojo Specialty Products Fair offers farm products grown in the Tojo area of Tondabayashi City.



**Summer**

When summer comes, zinnias and salvias cover the flower garden. Visitors can pick grapes in July, and many families come to enjoy the experience.



**Winter**

Savor Farm is filled with rape blossoms and daffodils in winter. In December, the Niko-Niko Thanksgiving Festival offers a wide variety of farm products at low prices.



## A Wide Variety of Hands-on Activities



### Fruit Picking

Visitors can pick and taste fresh fruits grown with care by experienced masters.



**Spring**

Strawberries

**Summer**

Grapes



**Winter**

Strawberries



### Vegetable Harvesting

Pick cabbage, onions, potatoes, sweet potatoes, daikon radishes and Chinese cabbage!



**Spring**

Spring Cabbage  
Onions  
Peas



**Summer**

Sweet Corns  
Bell Peppers  
Shishito Green Peppers



**Autumn**

Sweet Potatoes  
Taro  
Autumn Potatoes



**Winter**

Chinese Cabbage  
Daikon Radish



### BBQ House

Visitors can taste fresh vegetables and delicious meats while taking in the view of a beautiful flower garden. Enjoy the bounty of the land.



### Restaurant

The restaurant offers a wide variety of popular selections, including set meals with plenty of vegetables raised at Savor Farm and other farms in the area.



### Niko-Niko Market

Niko-Niko Market sells produce grown at Savor Farm, seasonal vegetables and fruits produced in the area, and some processed foods.



### Tondabayashi City Agricultural Park – Savor Farm

2300 Kannabi, Tondabayashi City TEL: 0721-35-3500

Savor Farm Search

[Access] Approx. 20 min. by free shuttle bus from Tondabayashi Station on Kintetsu Nagano Line  
[Open] 9:30 AM – 6:00 PM (9:30 AM – 5:00 PM between October and March)  
[Closed] Monday (Tuesday if Monday is a national holiday.) [Admission] Adult: ¥700 Child: ¥300



## Local specialty food and art crafts

### A wide variety of Tondabayashi Brand products!



**Bean Snacks**

(Suzume no Tamago, Soy Milk Kinako Daizu, Almond Espresso, Black Pepper Cashew)



**Octopus Dumpling-Flavored Rice Crackers**



**Strawberry Comfiture**



**Kawachi Citrus Sauce- Tsuyukko**



**Purses**  
(Large, Medium, Small)



**Osaka Eggplant with Miso**  
**Osaka Eggplant with Hot Miso**



**Book Cover made from Bamboo Blinds**



**100% Pure Honey**  
produced by Azuma Bee Farm



**Fried cookies of ebi-imo (taro) and vegetable**



**Green Tea Porridge Set**



**Unrefined soy sauce**  
with Eggplant made by Grampa Yosaburo



**Tondabayashi**  
**Eggplant Cake**



**Tomi Sun Hat**



**Canned Beef**  
**Yamatoni**



**Jinaimachi Rice Cracker**



**Orange Salad**  
**Dressing**



### Newly Featured Specialty

## Ebi-imo (Taro) Croquette

Croquettes made from Tondabayashi's specialty ebi-imo (taro) are delicious with the soft texture of ebi-imo wrapped in crispy bread crumbs. Enjoy the taste of fresh-fried croquettes when you visit Jinaimachi.

**(1 for ¥100)**



### You can eat here!



**Tondabayashi Croquette - Jinaimachi**

3-20 Hommachi, Tondabayashi City  
TEL: 0721-21-7536  
[Open] 11:30 AM ~ 2:00 PM  
on Saturday and Sunday  
(Closed when sold out.)

### A must-see spot for souvenirs! It is a sightseeing and culture landmark.

Kirameki Factory is where tourists can interact with the culture and art of Tondabayashi City.

Visitors can also find information on sightseeing spots in Tondabayashi and surrounding areas, buy local specialties, and enjoy a nice rest.

## Tondabayashi Kirameki Factory

19-8 Hommachi, Tondabayashi City TEL: 0721-24-5500

[Open] 10:00 AM ~ 9:00 PM Open every day excluding the Year End and New Year holidays.



Watch a video!

**REKISHI OISHI TONDBAYASHI -**  
**History and Delicious Food in**  
**Tondabayashi**



Eight spiritual  
places in  
Tondabayashi.





# Enjoy sightseeing spots along the Kintetsu Nagano Line!

The many historical spots along the Kintetsu Nagano Line include Tondabayashi Jinaimachi, burial mounds and Takenouchi Kaido Road. Learn about some great sites to visit in the Minami-Kawachi area, an area where life seems to pass at a slower tempo.

## Kanan-cho

The town invites visitors to the ancient past.

Kanan-cho is well known for Hirokawa Temple, the final resting place of the poet and Buddhist priest Saigyō, and the uniquely shaped Kanayama Burial Mound. Chikatsu-Asuka Museum and World Ranch are also fun places to visit.



Kanayama Burial Mound

## Kawachinagano City

Enjoy the natural beauty of water and greenery

Kanshin-ji Temple is well known as the place where young Kusunoki Masashige received his education, and for great sights of plum blossoms and autumn leaves. The Osaka Garden of Floral Culture and Takihata dam are rich in nature.



Kanshin-ji Temple

## Habikino City

Immerse yourself in the atmosphere of the ancient past

An area with many large keyhole-shaped tombs from ancient times. The city is working to have the Mozu and Furuichi Tombs registered as World Heritage.



The Mausoleum of Emperor Ōjin

## Taishi-cho

See nostalgic scenery and feel Japanese history

Takenouchi Kaido Road is the oldest national road in Japan. Culture from Mainland China and the Korean Peninsula spread along this road in the Asuka Period. There are many historical places such as Eifuku-ji Temple, where Shotoku Taishi is buried, and Ono no Imoko's tomb.



Takenouchi Kaido Road

## Chihaya-Akasaka-mura

The highest mountain in Osaka Prefecture, Mt. Kongo is a beautiful sight throughout the year.

Mt. Kongo was first opened by En no Gyoja, who is the originator of Shugendo, mountaineering asceticism. Nowadays, visitors enjoy hiking on this spiritual mountain



Mt. Kongo